



Flight Light Inc.  
2708 47th Ave.  
Sacramento, California, U.S.A.  
95822-3806



PH (916) 394-2800    FX (916) 394-2809  
TF (800) 806-3548    EM [info@flightlight.com](mailto:info@flightlight.com)

## StrobeGuard® SS-225 High Intensity White Strobe Lighting System

### Compliance

FAA AC: 150/5345-43  
ETL Certified L-856 High Intensity Lighting  
ICAO Annex 14, Type A High Intensity Obstacle Light  
Canadian Aviation Regulation 621.19  
MIL-C-7989, DGAC of Mexico

### Applications

High intensity obstruction lighting systems are typically used on structures taller than 500' (150M) above ground level to provide aviation safety. The use of a high intensity lighting system typically eliminates the need to paint the structure with aviation red and white stripes. The high intensity obstruction lights are designed for lighting tall structures such as television and radio towers, chimneys, cooling towers, tall buildings, catenary river crossings and bridges. The SS-225 is recommended for new installations in the USA and Canada.

### Design

The StrobeGuard® High Intensity Lighting System consists of multiple flashheads controlled by a single lighting control. The quantity and location of flashheads used is generally determined by the structure's height and diameter. The StrobeGuard® controller constantly monitors the operation of each flashhead, and provides alarm contact closure upon any failure. The control automatically switches between day, twilight, and night intensities by the use of a calibrated photocell. StrobeGuard® flashheads incorporate a louver system to minimize ground scatter light, resulting in a "community friendly" lighting system. The StrobeGuard® system can be combined with a red lighting system for areas where white lighting at night may be undesirable.

### Features

- Fail-safe monitoring system
- Parabolic optics minimize 'ground scatter' light
- Two-wire cable for sync, mode and monitoring
- Safety interlocks in each flashhead
- Long-life internally triggered strobe tubes
- Automatic three-level intensity control
- Manual intensity override
- Plug-in-play circuit cards
- Remote alarm contacts
- Stainless steel NEMA 4X enclosure
- Vertical level indicator and adjustment system
- Fully Field Serviceable components
- Minimal wind loading and weight



### StrobeGuard® Control

StrobeGuard® controls contain the flash interval and timing circuits, intensity selection controls and monitoring circuitry with status indicators. The StrobeGuard® control system is designed to operate up to 24 flashheads at a distance of up to 2500 feet (760 M), using a noise-resistant communications format. Each control is equipped with the necessary manually operated controls to test all modes of operation. Bi-color green/red LEDs are provided to indicate proper operation or fault of each flashhead. Controller is available with GPS Sync module for synchronization with existing high intensity strobe systems.

### SS-225 Flashhead Advantages

Each StrobeGuard® Flashhead contains a flashtube, reflector assembly, power supply and trigger circuitry in a single enclosure. All circuit boards are plug-in-play with conformal coating for weather resistance. StrobeGuard® Flashheads are designed to be fully field serviceable for the circuit cards, flashtube, trigger transformer, high voltage relays, fuses/surge arrestors, capacitors and diode block. The flashheads utilize an internally triggered strobe tube that eliminates ozone, a corrosive agent that can damage wiring and circuitry over time.

Visit our web site: [www.flightlight.com](http://www.flightlight.com)



Flight Light Inc.  
 2708 47th Ave.  
 Sacramento, California, U.S.A.  
 95822-3806

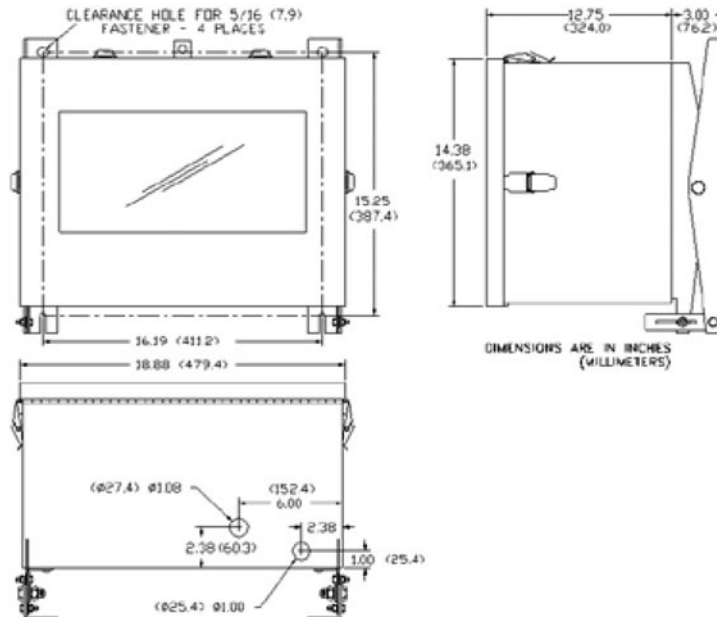


PH (916) 394-2800    FX (916) 394-2809  
 TF (800) 806-3548    EM info@flightlight.com

**StrobeGuard® SS-225**  
**High Intensity White**  
**Strobe Lighting System**

**Specifications**

<b>Photometric</b>	Day	270,000 candela ±25% (FAA)
	Twilight	20,000 candela ±25% (FAA)
	Night	2,000 candela ±25% (FAA)
	Beam Spread	3° Vertical minimum
	Horizontal Coverage	120° coverage
	Cut off Angle	<3% light output at -10° Vertical
	Flash Rate	40 Flashes per Minute (FPM)
<b>Environmental</b>	Temperature	-67°F to +130°F (-55°C to +55°C)
	Humidity	95% relative humidity
	Will withstand exposure to:	Wind-blown rain from any angle Salt-laden atmosphere Wind speed of 240 kph (150 mph)
<b>Mechanical</b>	Weight, Controller	11 kg (24 lb.)
	Dimensions, Controller	14" H x 12" W x 6" D
	Weight, Flashhead	37 kg (82 lb.)
	Dimensions, Flashhead	14.4" H x 16.2" W x 12.75" D
	Enclosure Rating	304 Stainless Steel, NEMA 4X
<b>Electrical</b>	Input Voltages	120, 208, 240, 277, 380, 480V
	Input Frequency	50 or 60 Hz
	Power Consumption	0.55kVA per flashhead



**Visit our web site: [www.flightlight.com](http://www.flightlight.com)**