



Flight Light Inc.  
2708 47th Ave.  
Sacramento, California, U.S.A.  
95822-3806

**Spare Parts Only**



**Airfield Lighting Control Panel**  
Type: L-821  
Honeywell

PH (916) 394-2800    FX (916) 394-2809  
TF (800) 806-3548    EM info@flightlight.com

# Airfield Lighting Control Panel

Type: L-821

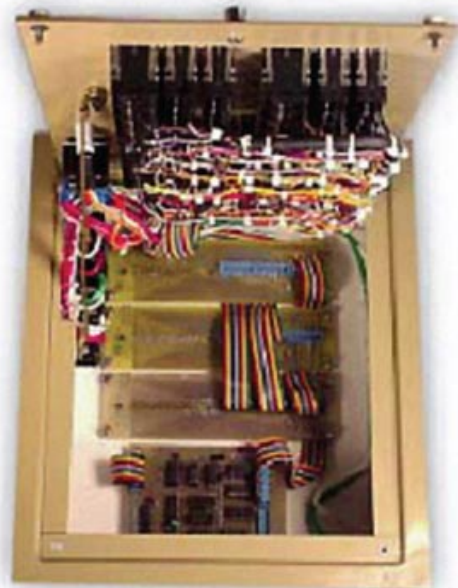
## Compliant with:

FAA Circular Advisory 150/534-3E

The L-821 Control Panel provides basic control of the Airfield Lighting System, and is usually operated from the Air Traffic Control Tower. Knobs, switches, and pushbuttons provide the ability to turn both systems on and off and vary the intensity of the constant current regulators feeding the lighting circuits. This is the most economical solution to controlling airfield lighting circuits.

Some of the product highlights and customizing that can be done with the Control Panel are as follows:

- Each Control Panel is custom made to suit individual site requirements.
- Each panel is pre-wired to a terminal block, requiring only connection to the terminal block for installation.
- Honeywell can provide backlit, mimic, and standard panels per site requirement.
- Programmable logic controller (PLC) based systems and computerized systems are available (see ALRCS section).



**Visit our web site: [www.flightlight.com](http://www.flightlight.com)**