



Flight Light Inc.
2708 47th Ave.
Sacramento, California, U.S.A.
95822-3806



PH (916) 394-2800 FX (916) 394-2809
TF (800) 806-3548 EM info@flightlight.com

L-865 Medium Intensity White LED Flashing Obstruction Beacon FTS 370w

Application

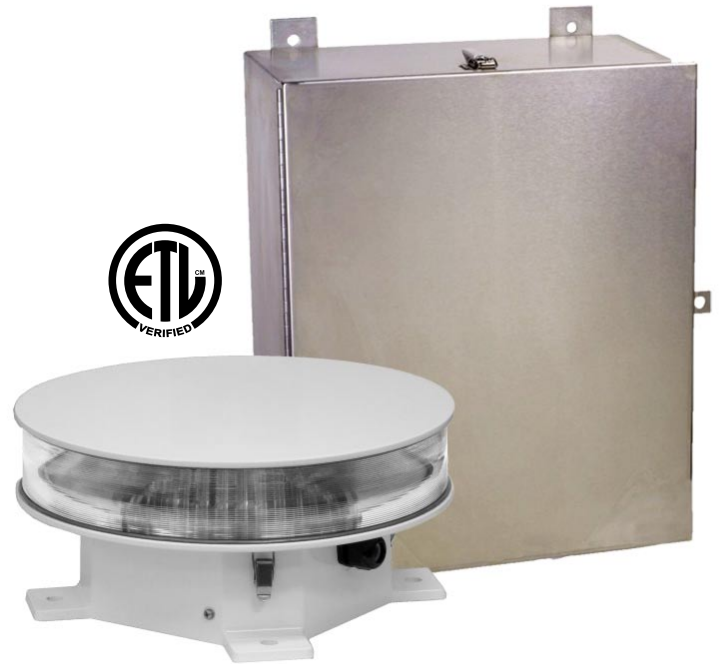
The FTS 370w is a white LED flashing beacon for day and night to create FAA tower types D1 or D2 for structures between 200' and 500' AGL.

Why Our Beacon is Better

- SMART™ flashhead/marker interface provides forward compatibility as technology improves.
- PLC - single 2-conductor cable provides power and communication to flashhead and markers.
- LED by-pass circuitry provides longer life by allowing the loss of individual LEDs up to the 25% limit per FAA Engineering Brief 67.
- Exceeds IEC 61000-4-5 Surge Immunity specification for power surges and transient voltage: tested to 10 times the FAA specifications standards, up to 20kA.
- Single stainless steel enclosure for power, control and monitoring with no interlock switch.
- Upgradeable firmware - remote or onsite via USB.
- Monitoring options:
 - Ethernet, cellular, satellite, POTS.
 - SNMP, Modbus, or Eagle protocols.
 - 3G AT&T, Verizon.
 - Dry Contacts (Day, Night, Marker, PEC, GPS, Comm, Mode).
- Optional Wi-Fi allows any Wi-Fi enabled device wireless connectivity onsite for diagnostics, programming and lighting inspections.

Specifications

- Power Consumption: Day 80W, Night 12W
- Input Voltage: 100-240 VAC
- Frequency: 50-60 Hz
- FH Dimensions: 15.75" dia. x 7.31"
- Controller Dimensions: 21.75" x 16.75" x 6.44"
- FH Weight: 26.3 lb. (11.92 kg)
- Controller Weight: 44 lb. (20 kg)
- Protection Rating: IP65, NEMA 4X



Visit our web site: www.flightlight.com



Flight Light Inc.
2708 47th Ave.
Sacramento, California, U.S.A.
95822-3806



PH (916) 394-2800
TF (800) 806-3548

FX (916) 394-2809
EM info@flightlight.com

**L-865 Medium Intensity White LED
Flashing Obstruction Beacon
FTS 370w**

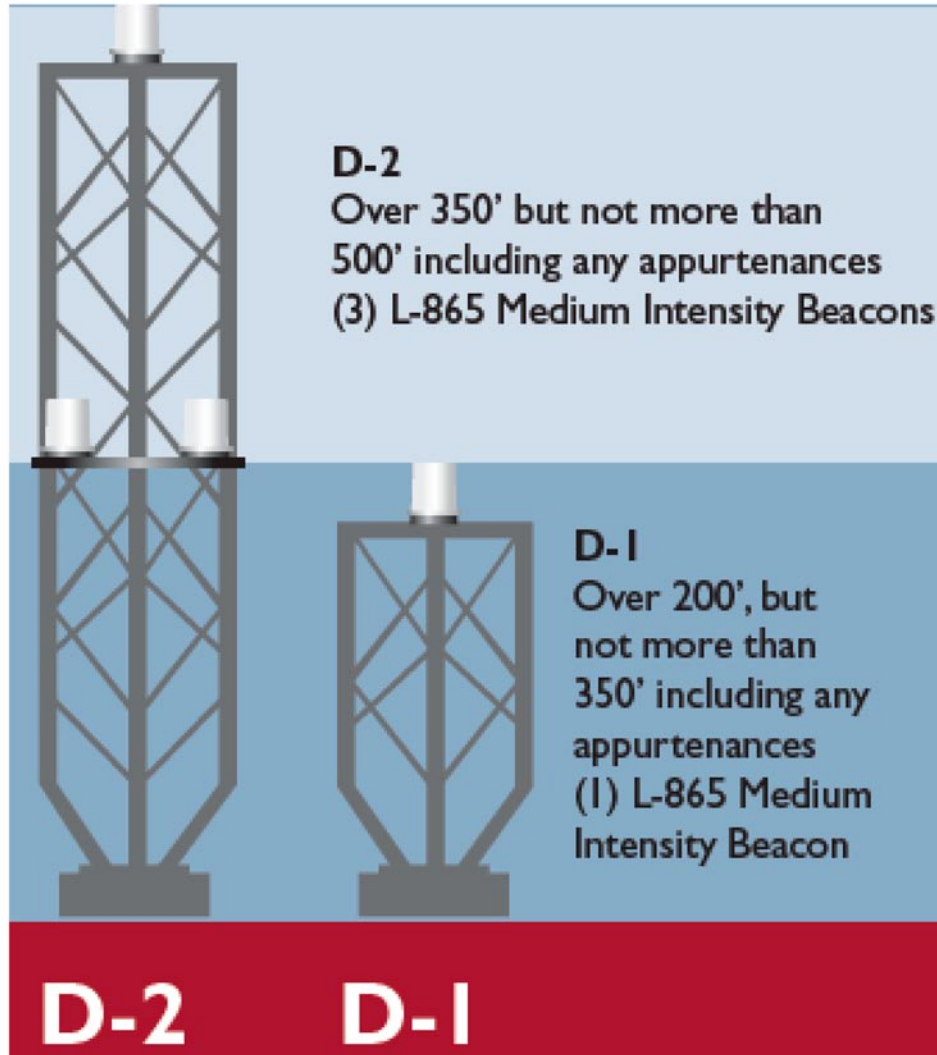


Diagram from FAA Advisory Circular AC 70/7460-1K Change 2, A1-18.
The FAA determination of no hazard for these towers are: Chapters 2, 4, 6

These guidelines are for reference only.

Please contact Flight Light for specific questions regarding obstruction marking.

Visit our web site: www.flightlight.com