



Flight Light Inc.
2708 47th Ave.
Sacramento, California, U.S.A.
95822-3806



PH (916) 394-2800 FX (916) 394-2809
TF (800) 806-3548 EM info@flightlight.com

L-864 LED Night Vision Compatible Flashing Red Obstruction Beacon

Compliance and Applications

ETL Certified L-864:
FAA AC 150/5345-43G; EB-67

Compliant to:
ICAO Annex 14 (Medium Intensity Type B & C)
Transport Canada CAR 621.19
DGAC of Mexico
MIL-C-7989

Our NV-Series LED obstruction beacons combine the energy and cost saving benefits of LEDs with advanced technology to ensure reliable operation in all environments. The NV-L864LED is the most compact and efficient medium-intensity LED obstruction beacon on the market.

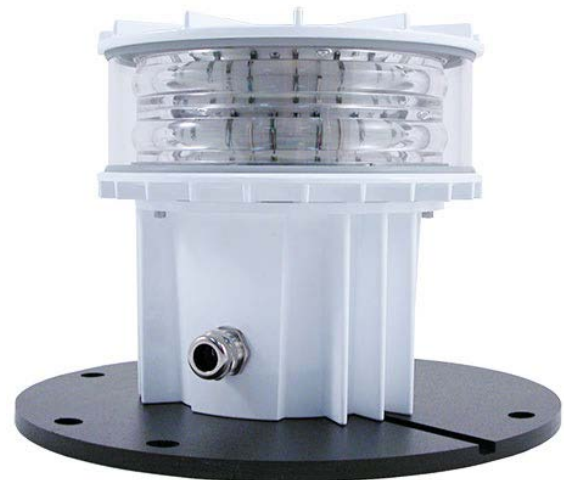
All NV-Series obstruction beacons are compatible with NVG and NVIS systems, making them the first true LED replacements for incandescent obstruction beacons. Night Vision Goggles (NVGs) and Night Vision Imaging Systems (NVIS) typically use filters that make common LED obstruction beacons invisible to pilots. Our NV-Series obstruction beacons combine Red (620nm) and IR (850nm peak intensity) LEDs to ensure that obstructions marked with our beacons and side lights are visible to all pilots.

Why Our NV-L864LED is Better

- Saves energy and requires no regular maintenance.
- Compact and lightweight design simplifies installation.
- Dual mode beacon - Night Vision Goggle friendly.
- Advanced lightning protection.
- Active power factor correction.
- Integrated alarm contact.
- Integrated GPS sync and photocell (optional).
- Resistant to shock and vibration.
- Mounts to standard bolt circle (13.25").
- 5-year warranty.
- Designed and manufactured in California.

GPS Module Option

The GPS module is used to efficiently synchronize multiple beacons in locations where it isn't practical to connect them by wire. Our module has a backup timing device to ensure that the lights remain in sync in the absence of a GPS signal. It also incorporates an advanced light sensor that ensures precise detection of ambient



light levels, so your beacons always turn on when light conditions fall below FAA-specified levels.

Specifications

Nighttime Intensity: 2000 candelas
Wattage: Flashing < 9W (avg.); Steady Mode 60W
Input Voltages: 90-265 VAC (50/60 Hz), 24-48 VDC
Power Factor: > 0.95
Dimensions: 10.625" D x 10.5" H
Mounting: 13.25" Bolt Circle
Weight: 18 lb. (8.16 kg.)
IP Rating: IP66

Operating Conditions

Temperature: -67°F to +131°F (-55°C to +55°C)
Wind: 150 MPH
Humidity: Up to 95% relative humidity
Salt Fog: MIL-STD-810E, Method 509.3

Ordering Codes

Fixture	Input Voltage	Flash Rate	Options
NV-L864LED	AC: 90-265 VAC DC: 24-48 VDC	20: 20 FPM (default) ST: Steady	GPS: GPS Module

Shipping Information:
21 lb. (9.5 kg); Carton: 17" x 17" x 17"

Visit our web site: www.flightlight.com

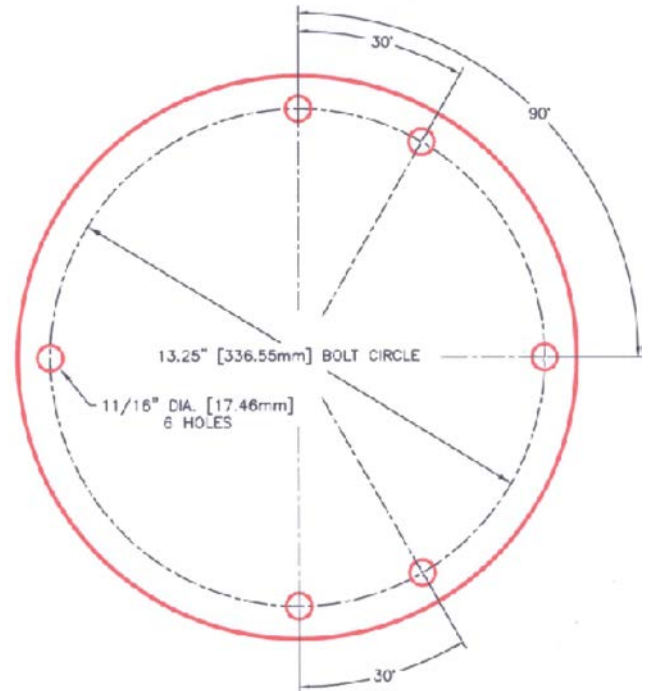
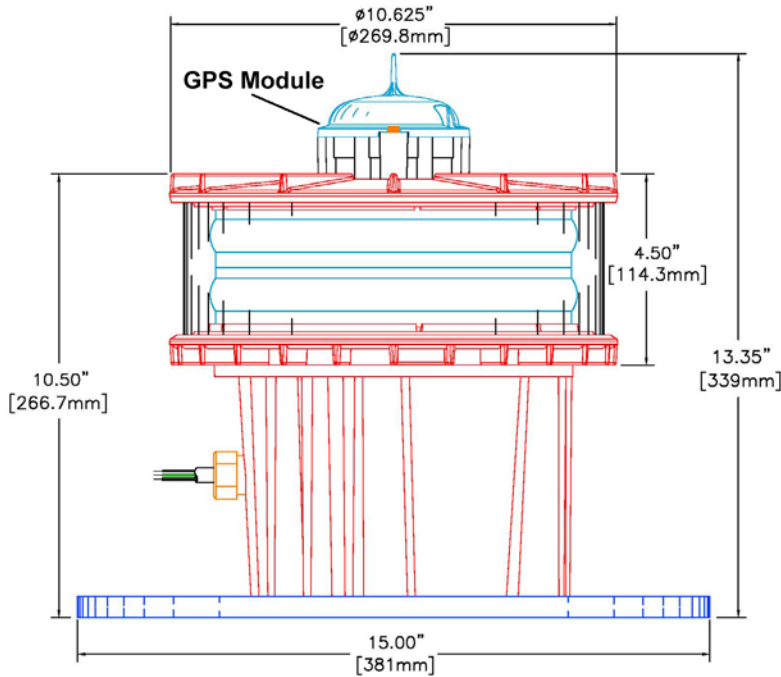


Flight Light Inc.
 2708 47th Ave.
 Sacramento, California, U.S.A.
 95822-3806



PH (916) 394-2800 FX (916) 394-2809
 TF (800) 806-3548 EM info@flightlight.com

L-864 LED Night Vision Compatible Flashing Red Obstruction Beacon



Obstruction Lighting Controls

Lighting controls are designed for use when multiple obstruction light fixtures are to be controlled with common electronics. The electronic control module comes in a cast iron device box with threaded hubs on both top and bottom. Replacement modules (controls without device box) are also available upon request.

Photocell

Model 81020 120VAC, 1000W photocell. FAA style photocells activate at 35 ft-cd and turn off at 58 ft-cd. A 45 second time delay prevents activation and de-activation from momentary light conditions. Does not come with device box, includes 1/2" threaded male fitting.

Model 81021 120VAC, 4800W photocell. Meets FAA/FCC requirements for obstruction lighting. Energized at 35 ft-cd and de-energized at 60 ft-cd. Time delay eliminates contact chatter. Contains dual 20A load contacts. Front plastic housing mounts to cast aluminum junction box (included).

Model 81022 Hazardous Location Photocontrol Unit. Outdoor lighting control for exterior lighting in hazardous locations: explosion proof, dust-ignition proof, and weatherproof. Nominal Voltage 50/60 Hz: 120/208/240/277. Voltage Range: 105-305. Housing: sand cast copper-free aluminum - epoxy powder coated.



Model 81020



Model 81021



Model 81022

Fixture Type	Model
FL-	81020: Photocell only (120VAC, 1000W max)
	81021: Photocell with aluminum box (120VAC, 4800W max)
	81022: Hazardous Location Photocontrol Unit

Visit our web site: www.flightlight.com