



Flight Light Inc.
2708 47th Ave.
Sacramento, California, U.S.A.
95822-3806

PH (916) 394-2800 FX (916) 394-2809
TF (800) 806-3548 EM info@flightlight.com

Airport
Wire Marker
Model JX

Applications

Mark power, communication, and guy wires at airport or helicopter approach areas.

Model JX is available in four diameters: 9", 12", 20" or 24".

Installation

This Marker installs easily on any wire 1/8" - 1" (custom wire sizes are available) through the use of two UV resistant neoprene strip bushings installed on the wire to match the diameter of the openings (boss) in the Marker. The Marker is then securely bolted around the wire, clamping down on the bushings.

Color Options

Our standard color is "International Danger Orange;" (U.S. Engineer's Spec. 595-121197 or British STD. 381C-1964-No. 557) however, yellow and white are available as an option. In some cases, these colors prove to be more visible, depending on the surrounding terrain. In some circumstances, such as river and canyon crossings, the FAA recommends an alternating pattern of Orange, Yellow, and White.



Airport Wire Markers



The Model JX requires only four bolts to clamp it to the wire.

Visit our web site: www.flightlight.com

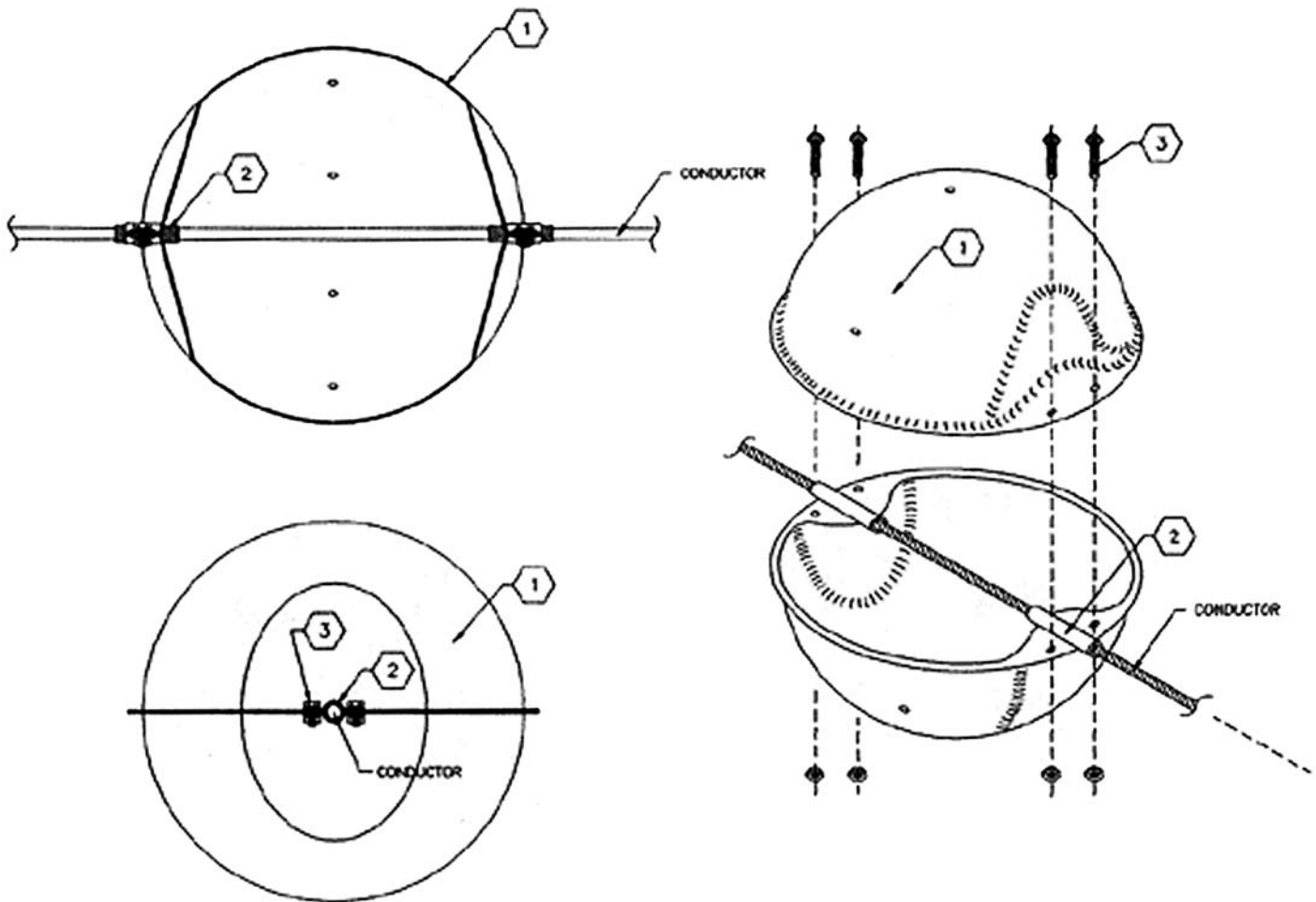


Flight Light Inc.
2708 47th Ave.
Sacramento, California, U.S.A.
95822-3806

PH (916) 394-2800
TF (800) 806-3548

FX (916) 394-2809
EM info@flightlight.com

Airport
Wire Marker
Model JX



Visit our web site: www.flightlight.com