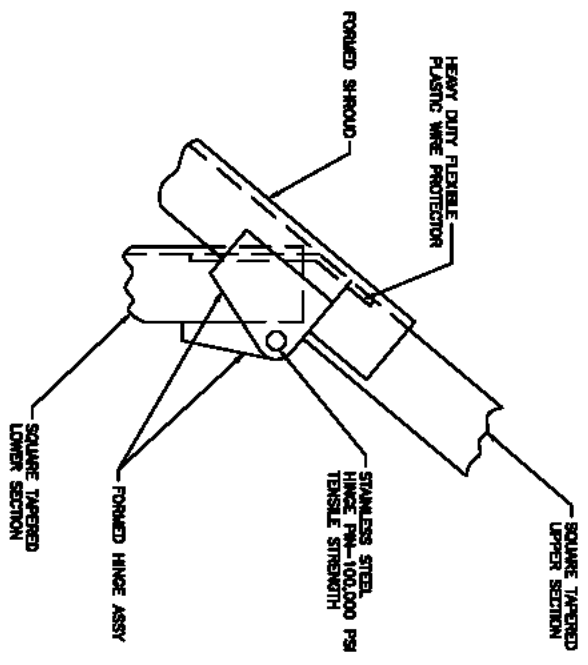
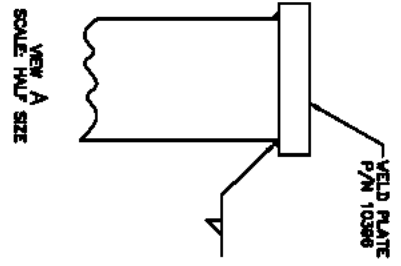
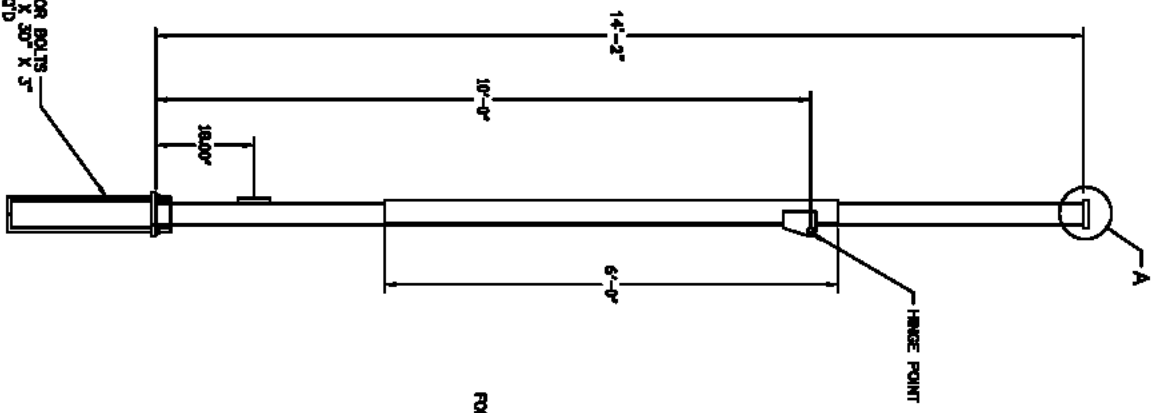
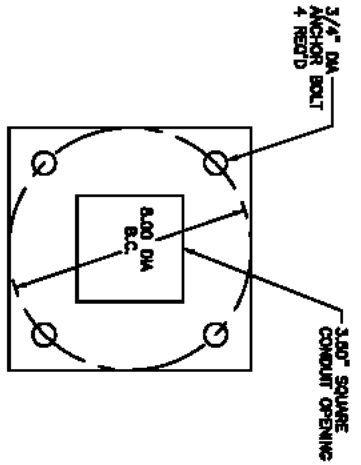


NO.	DESCRIPTION	DATE	BY



HINGE POINT DETAIL



NOTES:
1. ANCHOR BOLTS ARE TO PROJECT
5 1/2" ABOVE FOUNDATION TOP

ANCHOR BOLTS
3/4" X 30" X 5"
4 REQ'D
TAPERED END GALVANIZED
A MINIMUM OF 8 INCHES
SEE NOTE 1

NO.	DESCRIPTION	DATE	BY

PROJECT	PWC POLE - HSP
NO.	800181
REV.	R10392