



Flight Light Inc.
2708 47th Ave.
Sacramento, California, U.S.A.
95822-3806

PH (916) 394-2800 FX (916) 394-2809
TF (800) 806-3548 EM info@flightlight.com

10KW Through 70KW Constant Current Oil-Filled Regulators Medium and High Intensity FAA L-828

Compliance and Applications

FAA: L-828 (AC 150/5345-10F)

Flight Light's 10KW through 70KW oil-filled **saturable reactor network** constant current regulators provide precision control of runway lighting series circuits in medium and high intensity applications. Because they use **SOLA/Hevi-Duty's** extremely **reliable design** and **durable magnetic** components, our regulators are not susceptible to extraneous signals that cause competing solid state electronic designs to fail. In fact, our units are tested to assure zero interference with radio communications.

The constant current is maintained by automatically controlling the degree of saturation of the reactor via a closed control loop. The regulator RMS output current is sensed by a current transformer and supplied to a current dividing resistor network.

Why Our CCR's are Better

- **Five year limited warranty** - the best warranty in the world.
- Magnetic components are not susceptible to extraneous signals and do not create interference with radio communications.
- Designed for on-site service by airport maintenance electricians.
- Excellent current regulation, no load to full load and with up to 30% lamps inoperative. Output current stable within 0.1 amps at any output.
- Power factor exceeds industry standards: more efficient than required by FAA.



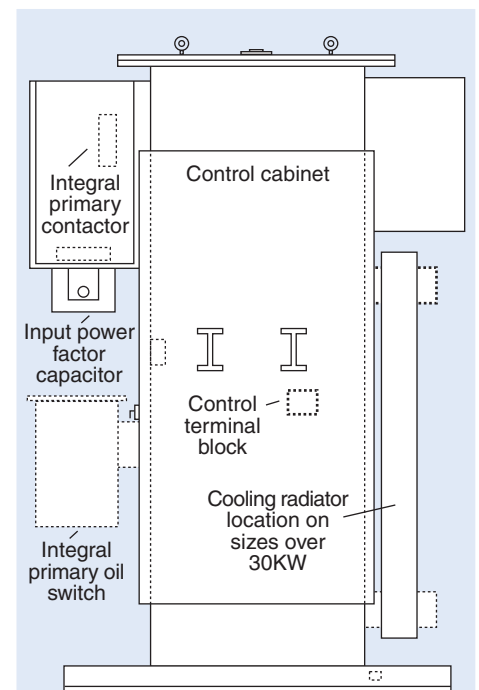
L-828 10KW-70KW Oil-Filled Regulator

- Withstands input overvoltage of 120% nominal for 50 milliseconds within one minute intervals.
- Automatically compensates for -5% to +10% input voltages.
- Input circuit electronically isolated from output circuit.
- Not activated by load switching or transients. Positive open-circuit or overcurrent protection automatically trips regulator off-line within 2 seconds, manually resets in less than 1 second.
- Resumes original brightness mode within 1 second of lost input power.
- Easy access to remote/local control switch.
- Customize individual brightness steps using simple slide adjustment.
- No solid state components in series circuit.

**Formerly
SOLA/Hevi-Duty**

Specifications

- Continuous indoor operation at a temperature range of -40°F to +131°F (-40°C to +55°C).
- Integral primary switch.
- Internally supplied local and remote control power.
- Direct read output ammeter.
- Output distribution class lightning arrestors.



KW	H	W	D	Lb.
10	66.5"	46"	34.75"	1475
15	66.5"	46"	34.75"	1575
20	66.5"	46"	36.25"	1625
30	68.5"	50"	38.75"	2200
50	77"	52"	38.75"	2500
70	77.75"	57"	38.75"	2900

Visit our web site: www.flightlight.com



Flight Light Inc.
 2708 47th Ave.
 Sacramento, California, U.S.A.
 95822-3806

PH (916) 394-2800 FX (916) 394-2809
TF (800) 806-3548 EM info@flightlight.com

10KW Through 70KW
Constant Current
Oil-Filled Regulators
Medium and High Intensity
FAA L-828

Ordering Code

Qty.	KW Size	FAA #	Code: Volts/Steps/Amps	Control Power	Type	Hertz	Accessory Codes
	10KW = 10 15KW = 15 20KW = 20 30KW = 30 50KW = 50 70KW = 70	Std. Reg. = L828 Unit W/Monitor = L829	V/S/A Code	48V Grounded DC 3 Internal	Oil = L	60 Hertz = 6 50 Hertz = 5	Elapsed Time Meter* ETM Input Arrestors IA Output Volt Meter* OVM Input Volt Meter* IVM Input Amp Meter* IAM Extra Contacts** EC Outdoor Enclosure 3R Fixed One Step FOS Cold Circuit Selector Switch A
			208/3/6.6 Z	48V Ungrounded DC 4 External			
			208/5/6.6 ZA	120VAC Int./Ext. 5			
			208/5/20 M	48V Grounded DC 6 Int./Ext.			
			220/3/6.6 N	24V Grounded DC 7 Internal			
			220/5/6.6 O	24V Ungrounded DC 8 External			
			220/5/20 P	24V Grounded DC 9 Int./Ext.			
			230/3/6.6 Q				
			230/5/6.6 R				
			230/5/20 S				
			240/3/6.6 A				
			240/5/6.6 C				
			240/5/20 F				
			380/3/6.6 T				
			380/5/6.6 U				
			380/5/20 V				
			415/3/6.6 X				
			415/5/20 Y				
			480/3/6.6 H				
			480/5/6.6 I				
			480/5/20 J				
			2400/3/6.6 B				
			2400/5/6.6 E				
			2400/3/20 GA				
			2400/5/20 G				
			4160/3/6.6 AA				
			4160/5/6.6 AB				
			4160/5/20 AC				
			4800/3/6.6 AD				
			4800/5/6.6 AE				
			4800/5/20 AF				

* All meters are analog only!
 ** Specify the contact's function (i.e., output current monitoring).

					L		
--	--	--	--	--	----------	--	--

					L		
--	--	--	--	--	----------	--	--

**For technical information
 and renewal parts
 call 1-800-806-3548.**

Printed in the U.S.A.

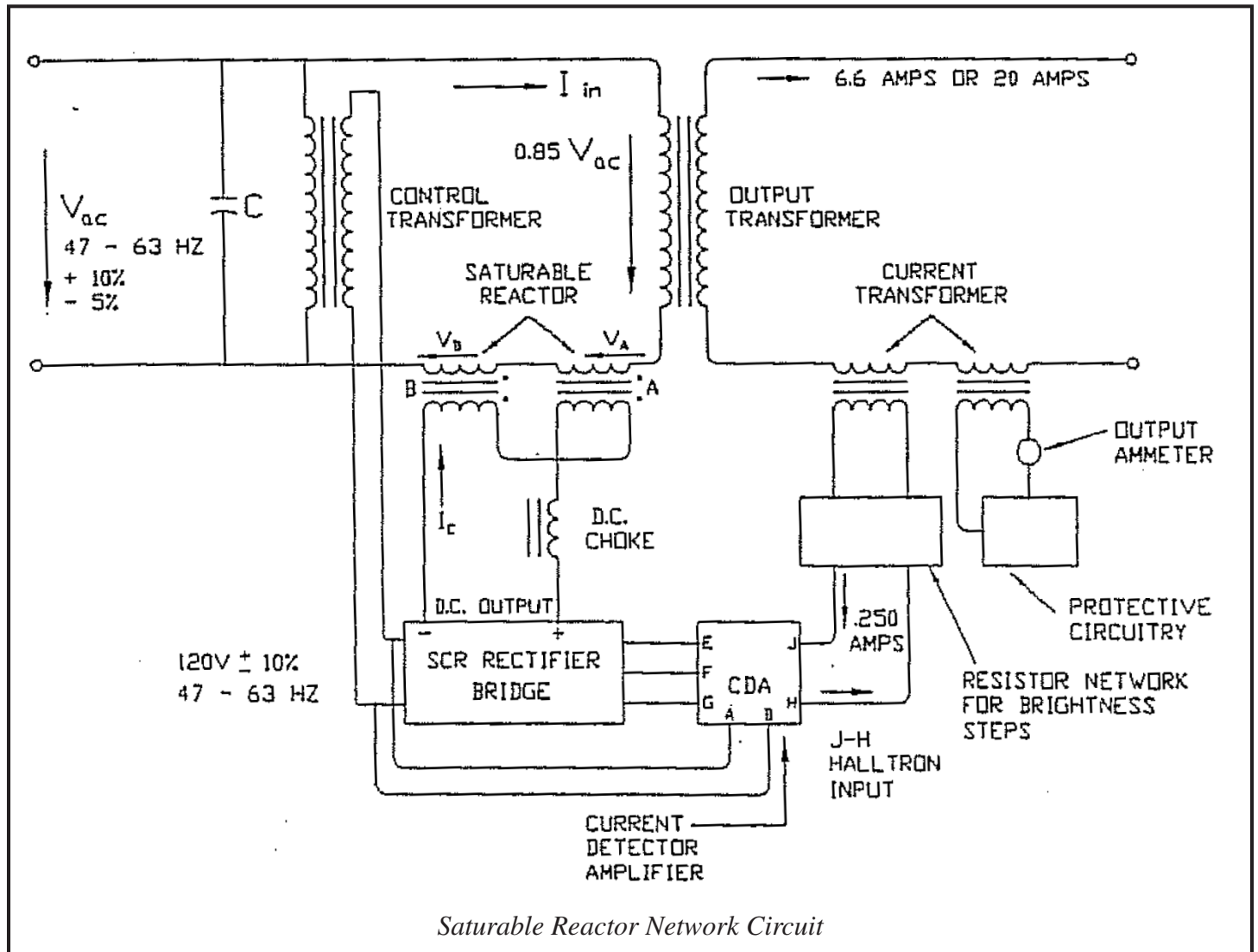
Visit our web site: www.flightlight.com



Flight Light Inc.
2708 47th Ave.
Sacramento, California, U.S.A.
95822-3806

10KW Through 70KW
Constant Current
Oil-Filled Regulators
Medium and High Intensity
FAA L-828

PH (916) 394-2800 FX (916) 394-2809
TF (800) 806-3548 EM info@flightlight.com



Saturable Reactor Network Circuit

Saturable Reactor Network CCR

The saturable reactor CCR consists of two saturable reactors, main isolation transformer and control circuitry. The AC reactance of the input saturable reactors is automatically adjusted to regulate the load current. It is a magnetic based design.

**For technical
information
and renewal parts
call 1-800-806-3548**

Visit our web site: www.flightlight.com