



Flight Light Inc.  
2708 47th Ave.  
Sacramento, California, U.S.A.  
95822-3806

atg airports (formerly ALSTOM)  
**ZA280 Inset Medium Intensity  
Taxiway Centerline Light**  
FAA Compliant: L-852A, B, C and D,  
NATO Stanag 3316, ICAO Annex 14

PH (916) 394-2800    FX (916) 394-2809  
TF (800) 806-3548    EM info@flightlight.com

### Compliance and Applications

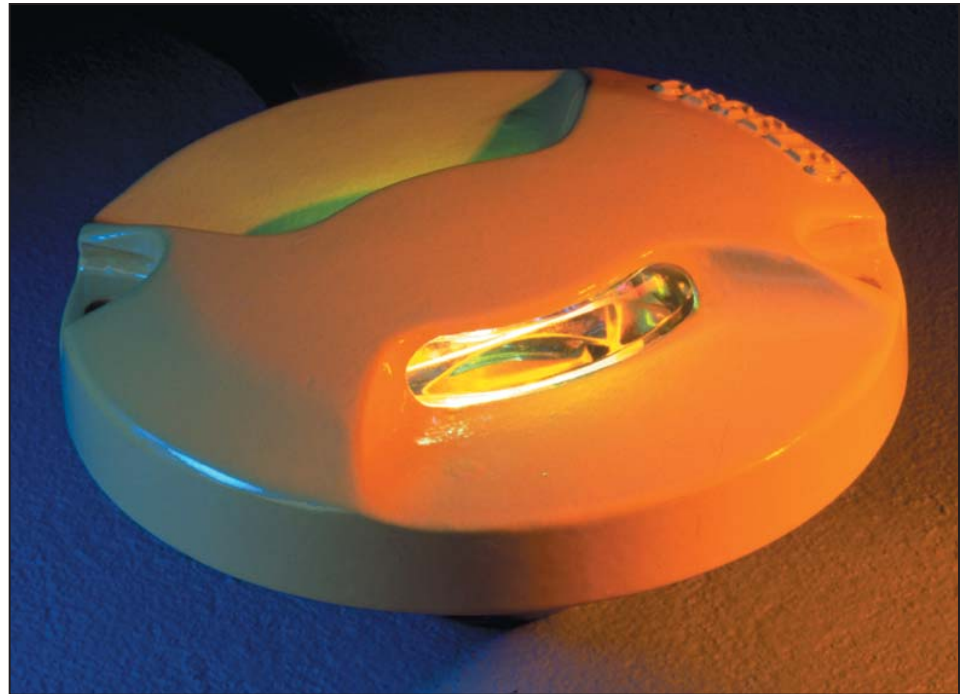
FAA Compliant: L-852A, B, C and D  
AC 150/5345-46A  
NATO Stanag 3316  
ICAO Annex 14  
Category I, II and III all weather  
operation airfield lighting systems.  
Suitable for use as high intensity inset  
taxiway centerline and stop-bar lights.

### Why Our ZA280 is Better

- ✓ Body of high tensile cast aluminum for strength and durability.
- ✓ Prism removal and replacement achieved without need for adhesives or sealants.
- ✓ Pre-focused optics.
- ✓ Simple maintenance.
- ✓ Plug for pressure testing after assembly.
- ✓ Installation and maintenance manual AVD 106.

### Specifications

- Low profile: .4 in. (10mm) projection.
- Stress bearing: 11 tons dynamic load and 22 tons static load.
- Long life halogen lamps: 1500 hours at full intensity. Dichroic reflector with male leads.
- Standard adaptor rings to suit 12" L868B base and 15.5" bases.
- Functions with 6.6a, 45w, or 100w isolating transformer.
- Powder coated finish in golden yellow or anodized. Stainless steel fasteners.
- Net weight 6.6 lb (3kg). Gross weight 7.7 lb (3.5kg). Carton size 9 in. x 9 in. x 5.7 in. (230mm x 230mm x 146mm)
- FAA Compliant L852A, B, C, & D using only one 48W lamp.



### Ordering Code

Fixture	Color/Color	Lamp	Mounting Configuration
80-ZA280	C: Clear	48: 48W, 6.6A	2: 8" diameter (203mm) with shallow base.
	B: Blue	50: 50W, 120V	
	G: Green	52: 50W, 240V	4: 12" diameter (304mm) base (L868B*).
	R: Red		
	Y: Yellow		
	X: Blank		

Color/Color			
80-ZA280			

\* Order with 16-28905 adapter ring if mounting on L868B base, sold separately.

Visit our web site: [www.flightlight.com](http://www.flightlight.com)



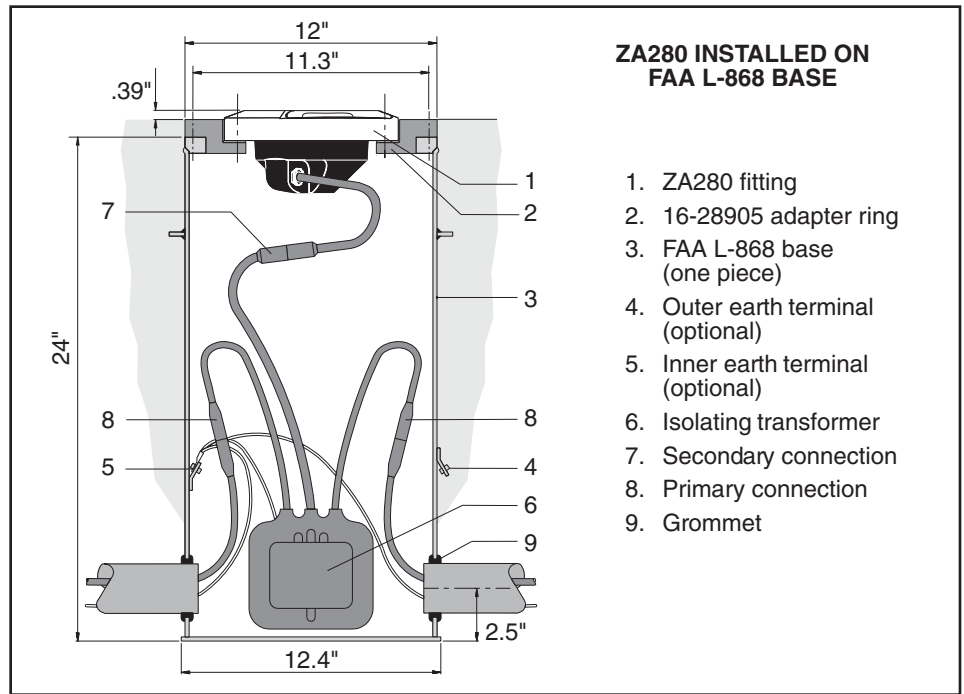
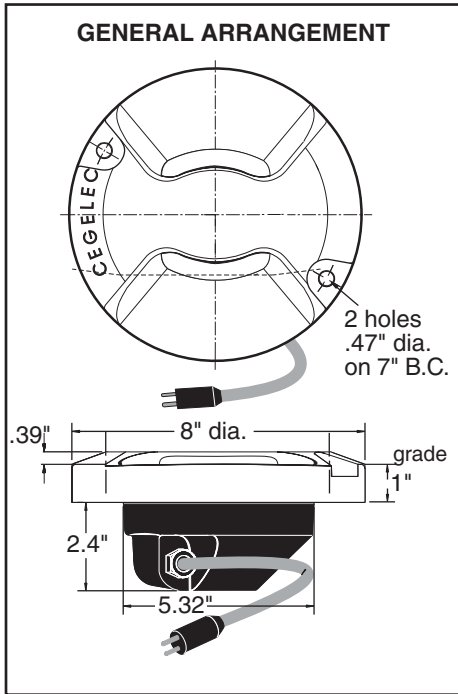
Flight Light Inc.  
2708 47th Ave.  
Sacramento, California, U.S.A.  
95822-3806

PH (916) 394-2800  
TF (800) 806-3548

FX (916) 394-2809  
EM info@flightlight.com

atg airports (formerly ALSTOM)  
ZA280 Inset Medium Intensity  
Taxiway Centerline Light

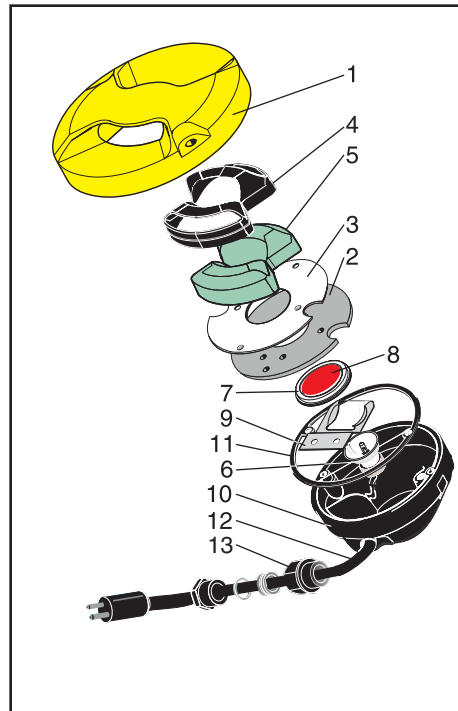
FAA Compliant: L-852A, B, C and D,  
NATO Stanag 3316, ICAO Annex 14



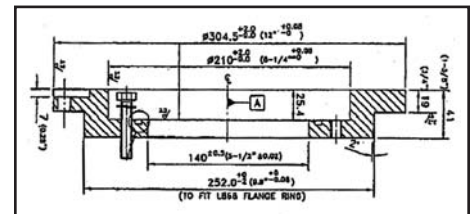
1. ZA280 fitting
2. 16-28905 adapter ring
3. FAA L-868 base (one piece)
4. Outer earth terminal (optional)
5. Inner earth terminal (optional)
6. Isolating transformer
7. Secondary connection
8. Primary connection
9. Grommet

### Common Replacement Parts

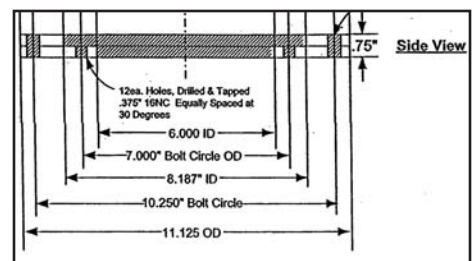
- |                          |               |
|--------------------------|---------------|
| 1. Body casting          |               |
| 2. Prism clamp           | 80-021268     |
| 3. Prism clamp gasket    | 80-033072     |
| 4. Prism gasket (2)      | 80-033071     |
| 5. Glass prisms (1 or 2) |               |
| clear                    | 80-016072     |
| blank                    | 80-040102     |
| 6. 48w 6.6a MR16 lamp    | LA-008065     |
| 7. Lamp gasket           | 80-033064     |
| 8. Filter                |               |
| red                      | 80-019155     |
| green                    | 80-019156     |
| yellow                   | 80-019157     |
| blue                     | 80-019201     |
| 9. Lamp retaining spring | 80-032039     |
| 10. Bottom cover         |               |
| 11. Bottom cover gasket  | 80-033080     |
| 12. 'B' type plug lead   | 80-013001     |
| 13. Cable gland assembly | 80-021114/5/6 |



### Optional Mounting Configurations



L-868B 8"-12" Adapter/Flange Ring  
P/N 16-28905



L-867B Adapter/Flange Ring  
(2 piece for mounting under can flange)  
P/N 30-867A8-12-2

Visit our web site: [www.flightlight.com](http://www.flightlight.com)